



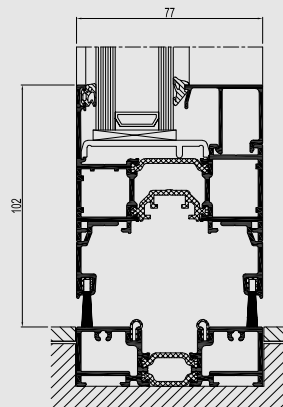
# NORTHVIEW GROUP

WWW.NORTHVIEWCANADA.COM  
501 Oakdale Rd, Toronto, Ontario, M3N 1W7  
Mobile: 1 866 451 4451  
Fax: 416 736 7550  
Email: info@northviewcanada.com

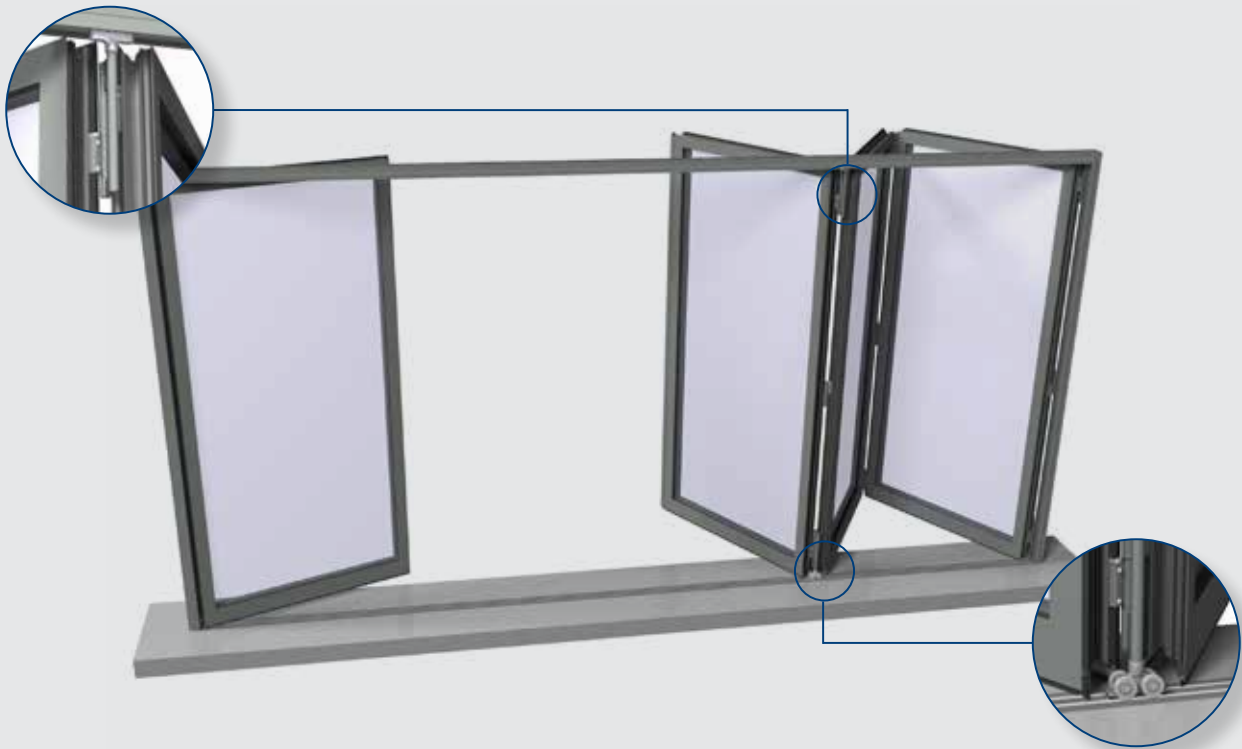


## CONCEPT FOLDING 77

Invite nature into your building



People are continuously looking for ways to maximize their space, as well visually as physically. The Concept Folding® 77 offers them the opportunity to optimize the utilization of their rooms, drawing the external environment into their homes. Next to the improved space utilization, this innovative system offers the advantage of loads of daylight coming in, as well as an aesthetic design. Another practical feature of CF 77 is the optional door locking principle which allows to use the first leaf as an entrance door without affecting the folding capacity of the system.



## A WIDE RANGE OF SOLUTIONS

With CF 77, design and user friendliness go hand in hand with high technical performance. The standalone solution exists out of new profiles, accessories and insulation technologies that have specifically been designed for folding systems. It ensures high insulation values ( $U_f$  values down to  $2,25 \text{ W/m}^2\text{K}$ ) that meet stringent local legislation requirements as well as market demands. Available in a number of configurations using between 2 and 8 door leaves, you can choose a design where the complete set of vents stacks to the same side, or split the design at any position, possibly integrating a central door solution.

### Innovative functional and technical features:

- Highly thermally insulating
- Water resistance up to 600 Pa
- Glazing up to 63mm
- 2 to 8 vent combinations
- Burglar resistant variant
- Large vent sizes
- High vent weights
- In- and outward opening using the same profiles
- Window or door functionality for the first vent
- Integrated and centrally built-in bottom rolling system

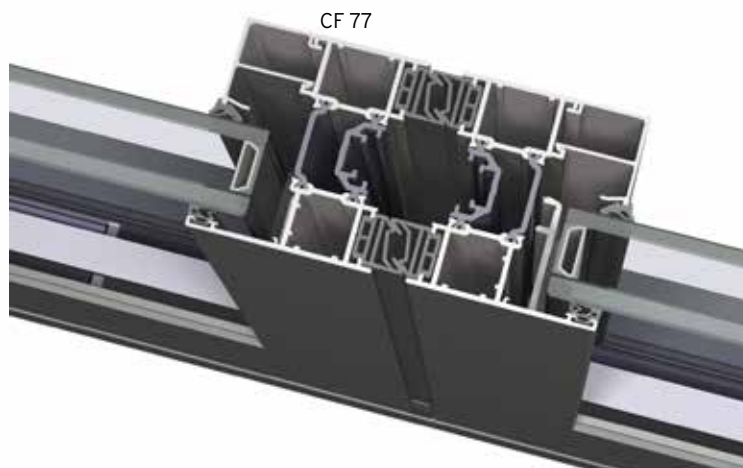
	Max. vent size (inch)	Max. vent weight	$U_w \text{ (W/m}^2\text{K)}^*$	$U_f \text{ (W/m}^2\text{K)}$	Visible width vent-vent sect.
Reynaers CF 77	47 x 118	120kg	down to 1,66	down to 2,25	5.6 inch
Reynaers CF 77-SL	47 x 118	120kg	down to 1,64	down to 2,31	4.5 inch

\*  $U_g$ : 1,1  $\text{W/m}^2\text{K}$   
4-panel: 4000 x 2700 mm

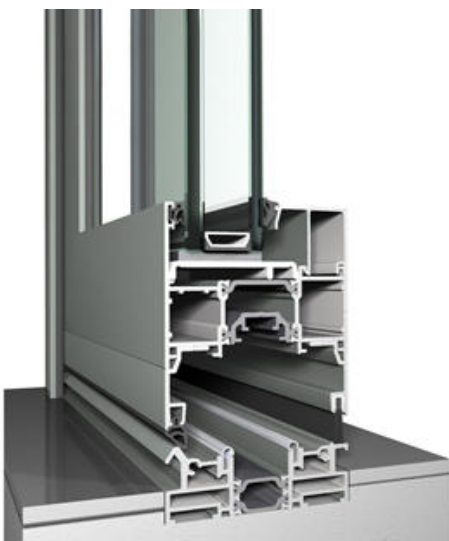
## Design variants

Next to the functional design, the CF 77 is supplemented with a Slim-Line variant, the CF 77-SL, featuring a narrower visible width. Both designs are available in four different door sill solutions: High Performance, Double Weather Seal, Low Threshold and Flat Bottom Solution.

The High Performance option offers maximum performance in terms of air, wind and water resistance. The Double Weather Seal solution combines good air, wind and water resistance with decreased threshold and is well suited for renovation projects. The Low Threshold option offers a rise of only 18 mm and finally the Flat Bottom solution allows easy passage and maximum convenience for high traffic.



4 different threshold solutions meeting functional needs and performance levels:



**Low Threshold**



**Double Weather Seal**



**High Performance**

